

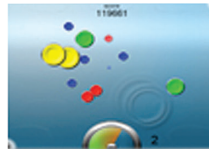
APPLICATIONS MODULE INCLUDES:



GRID/ROTATING MENU



MAP



TAP



MEDIA VIEWER



3D MODEL VIEWER



SPECIAL EFFECTS



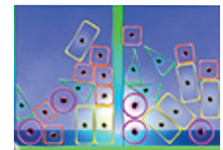
SNOWDOKU



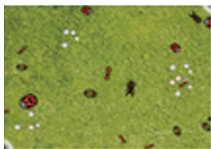
DRAW



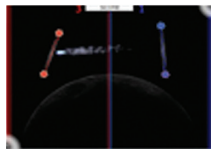
PUZZLE



STACKS



BUGS



WONG



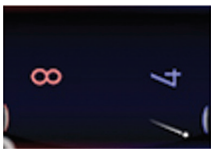
FLOW



DRUMS



SLIDER



PONG



CONNLEDGE



SLOT MACHINE



PIANO



GRAVITOYS



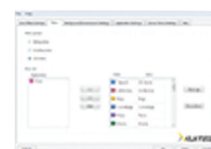
PDF VIEWER



FROGGY



DRAW ON VIDEO



GUI CONFIG EDITOR



AIR HOCKEY

Totally Interactive and NUI are able to offer a truly interactive experience

Natural User Interface Europe AB (NUI) is a Sweden headquartered innovative emerging technology company, specializing in commercially available advanced multi-touch software, hardware and service solutions.

Our solutions can convert an ordinary surface into an interactive, appealing and intelligent display that creates a stunning user experience.

We have been offering our pioneering multi-touch technology for more than two years to a wide variety of industries from corporate organizations to governmental institutes across the globe.

NUI Suite Snowflake is the industry leading software technology package, which is a framework with a sophisticated set of multi-touch software applications with NUI.

Touch Core, a vision tracking engine, that allows for gesture based natural and intuitive interaction of digital content.

Snowflake is a robust, fast and reliable image processing, motion sensing solution, that is utilized in various industries, amongst others in museums, exhibitions, digital signage, retail, real estate, public spaces, kiosks, gaming, casino, entertainment, education, military and more.

Totally interactive can also supply custom projects using Snowflake as the base programme.

System Requirements

- 3.0 GHz Core 2 Duo or equivalent
- 1 GB memory
- NVIDIA® 6xxx series or better. Not all ATI® cards are supported.
- Firewire camera

Snowflake Suite features:

- FTIR, LLP (laser technology), Front and Rear DI compatible (true multi-touch)
- Detailed user manual included with FAQ
- HP TouchSmart and NextWindow™ compatibility plug-ins (single and dual touch only)
- Developed on fast and reliable C++ platform
- Supports applications developed in Python, VVVV, Flash, Air, Flex, C++, C, C#, Java, Processing and other programming languages
- Support multiple CPU cores
- Intuitive
- Customizable backgrounds, logo's, images, 3d models, videos etc
- Gesture recognition library
- Touch Core tracking engine (Advanced fast image processing)
- Support for a wide variety of camera's
- True multi camera support (for example 2, 4 and more)
- Multi-monitor/multi-projector
- Any aspect ratio
- Module/plug in based system
- Integrated calibration module
- TUIO / OSC (Open Sound Control) support (sending and receiving events)
- Low level API
- Hardware accelerated rendering
- USB connectivity support (copy files to USB memory)
- Support for wide variety of media types (jpg, jpeg, tga, png, dds, gif, tiff, bmp, mov, mp4, avi, wav, ogg and all other codecs supported by QuickTime®)
- Advanced window handler that supports scaling and rotation
- Suitable for Windows® XP, Windows® Vista and Windows® 7
- Audio support
- Single, dual and multi-touch support
- Dynamic background subtraction
- Support for setting high-pass and threshold/brightness values
- Background masking (to remove permanent/static spots)
- Multi-threaded resource handler (For fast data visualization)
- Touch Core can be used with any programming language that supports TUIO, i.e. C/C++/C#, Java, Flash, Python, VVVV etc, meaning that software developers can create their own applications on Touch Core.
- Touch Core (tracking engine) and NUI TEQ Applications are also available as separate modules, in case you want to run your own developed multi-touch applications with our tracking software or run our applications with your own tracker.